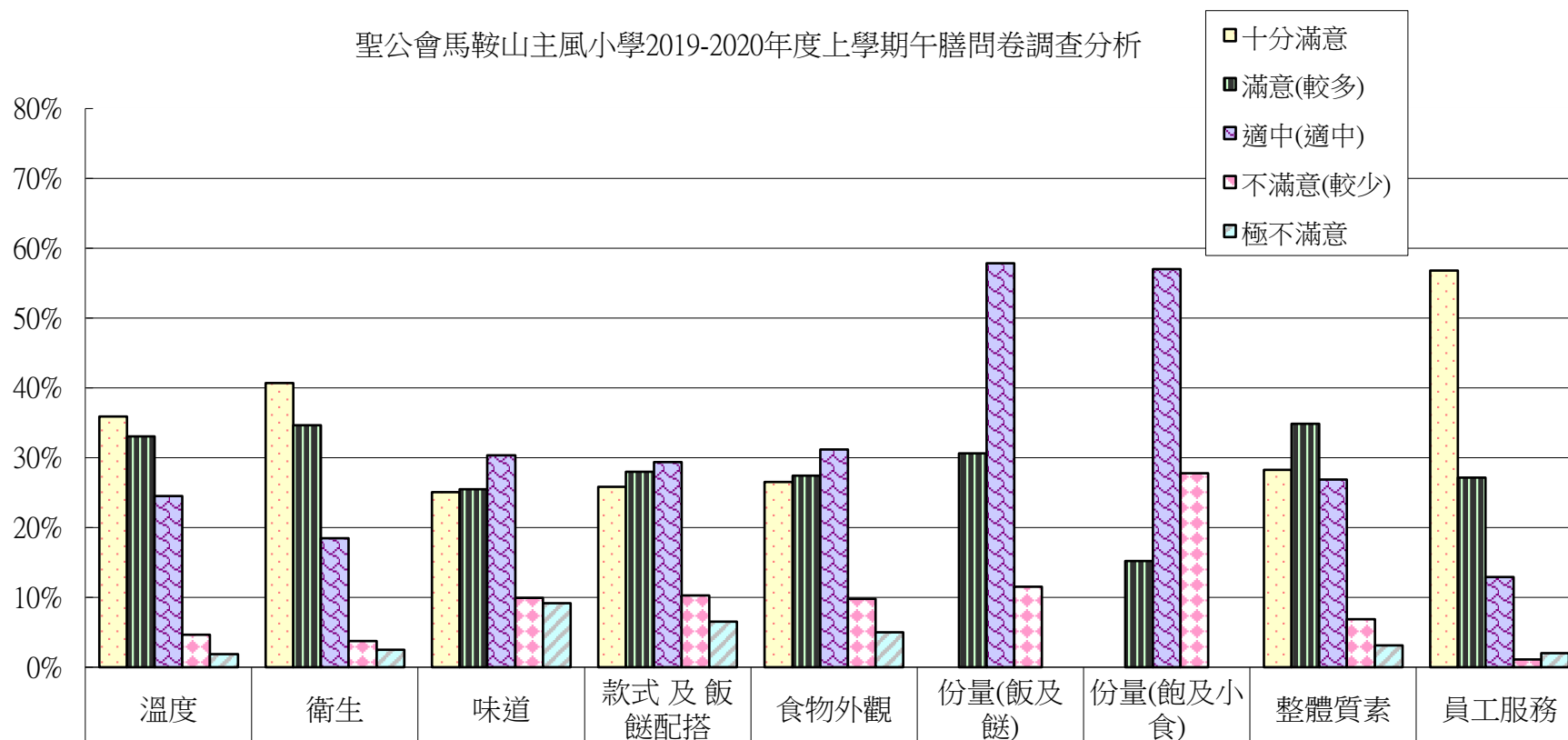


聖公會馬鞍山主風小學2019-2020年度上學期午膳問卷調查分析



十分滿意	36%	41%	25%	26%	27%	0%	0%	28%	57%
滿意(較多)	33%	35%	26%	28%	27%	31%	15%	35%	27%
適中(適中)	25%	18%	30%	29%	31%	58%	57%	27%	13%
不滿意(較少)	5%	4%	10%	10%	10%	12%	28%	7%	1%
極不滿意	2%	2%	9%	7%	5%	0%	0%	3%	2%